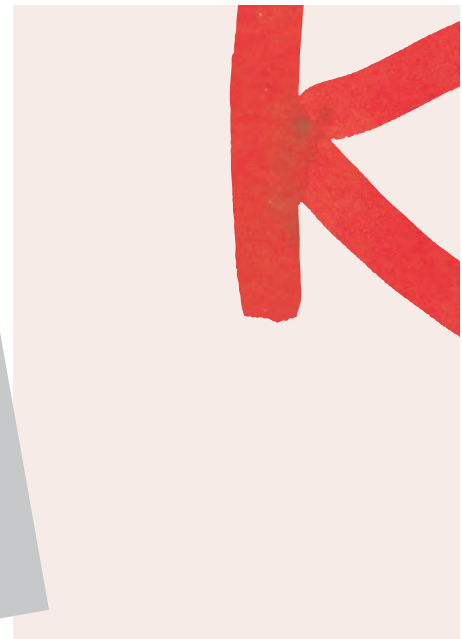


KÄLLEMO NEWS 2011





Anna Kraitz



Mats Theselius



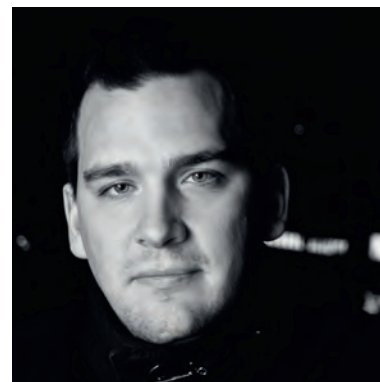
Jakob Thau



Lina Huring



Matti Klenell



Staffan Holm



KÄLLEMO HQ Värnamo Sweden

## WHAT IS QUALITY?

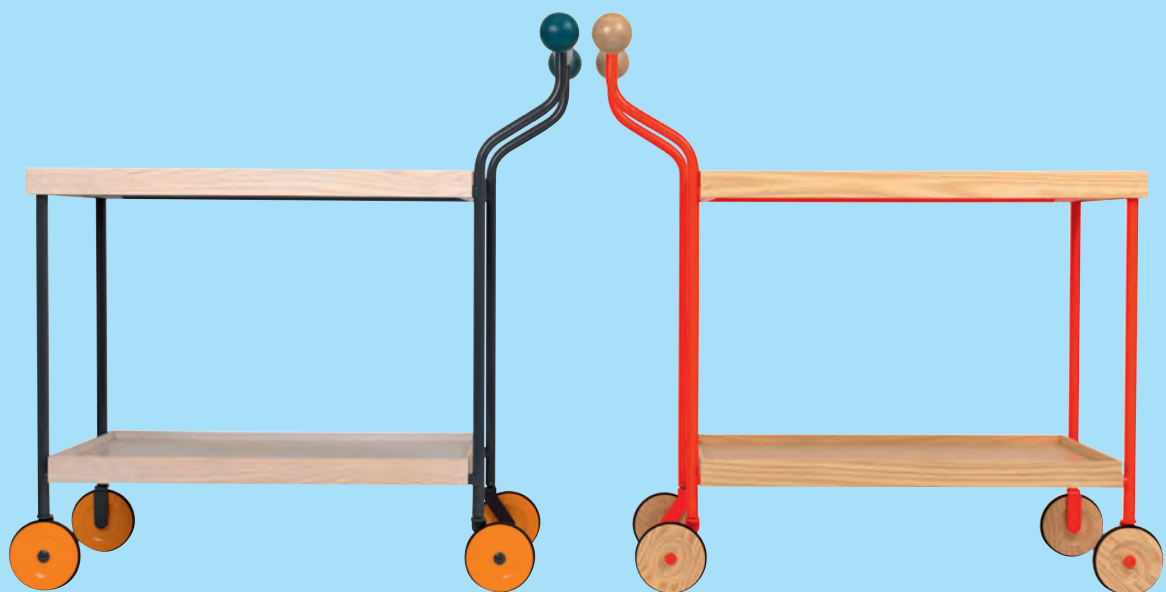
Furniture is a concept, with a will of its own, conveying an expression. It is no doubt difficult to choose when clever operators with glossy catalogues tell you about the most recent trends. You do not have to be particularly intelligent to realize that the latest is succeeded by something else in the next catalogue.

Our ambition is to work with designers and artists who are aware of what quality stands for - accomplishment unaffected by trends. On reflection, it is obvious that quality is just not measured in term of such things as strength of glued joints, etc. The measurable aspect is quantity, whereas quality is a broader concept and can not be measured in the traditional sense.

The most important aspect is the visual quality. Good quality means long-term validity.



**CRAWLING TABLE** by Anna Kraitz  
steelframe, turned wheels in ash  
tabletops in ash veneer  
H 52 D 55 L 120 cm



**DARJEELING** by Anna Kraitz  
steel frame with turned handles and wheels in solid ash  
trays in ash  
H 94 D 48 L 98 cm



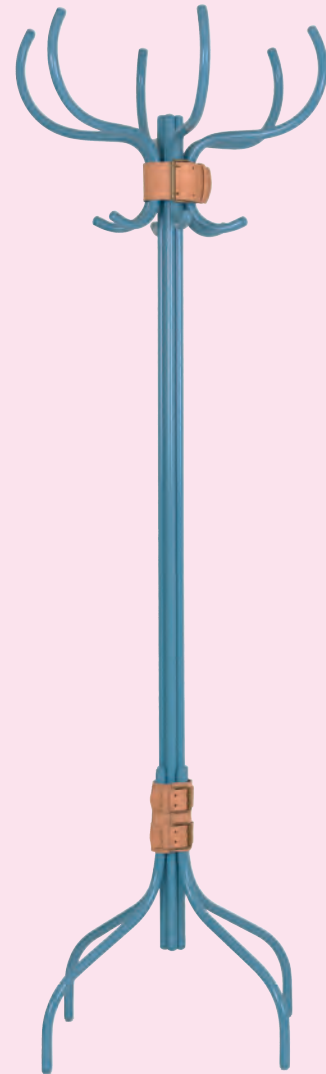
“nobody puts Babe in the corner”



white



copper



blue

**BABE** by Anna Kraitz  
Steel frame, lacquered or coppered, leatherbelt  
H 190 W foot 61 top 59 cm

line  
whirl  
check  
landscape



**HURING** by Lina Huring  
lacquered steel frame, trays with 4 different patterns  
H 50/35 W 65



**SPECTRA** by Matti Klenell

Wooden frame in solid ash. 5 fixed cushions in different matching colours

5 loose cushions in different colours

H 70 W 95 D 102 SH 36 cm





**SPOT** by Staffan Holm  
table top and legs in solid ash  
dismountable legs, delivered in flat pack  
H 48 W 85 / H 42 W 55 cm



**RONDO** by Jakob Thau  
turned legs in solid ash, chromed or lacquered steel knot and foot ring, seat  
in ashvener  
H 46/76 W 39 cm

**BIRD**  
stair  
fittin  
limit  
H 65



**BIRDLAND** by Mats Theselius  
stainless steel, chromed frame and milled  
fittings, corian armrests, leather  
limited edition of 360 pcs  
H 69 W 59 D 74 cm

KÄLLEMO



KÄLLEMO AB box 605 331 26 värnamo sweden  
www.kallemo.se info@kallemo.se  
made in sweden