

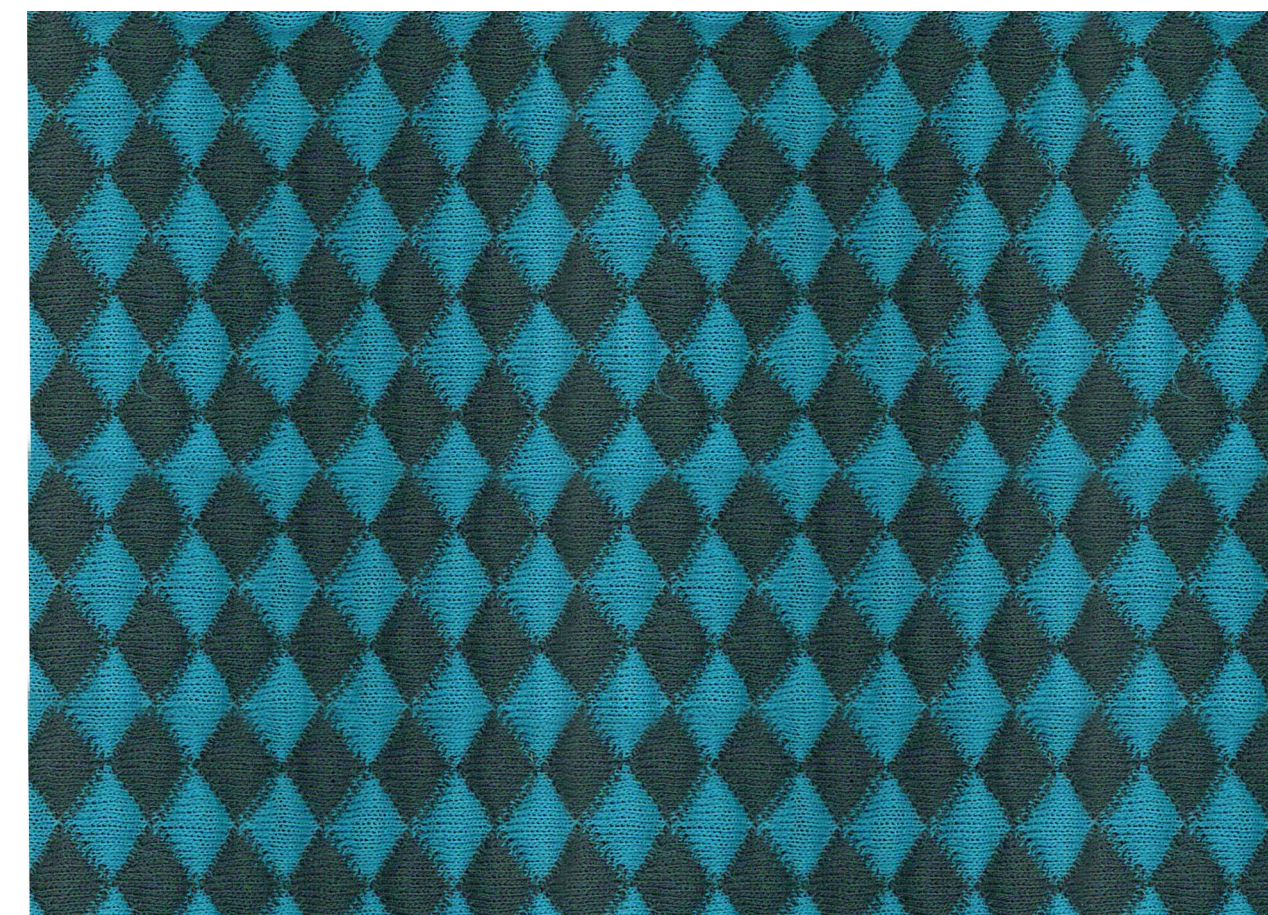
Crystals Fabric group F / Upholstery category 3



White

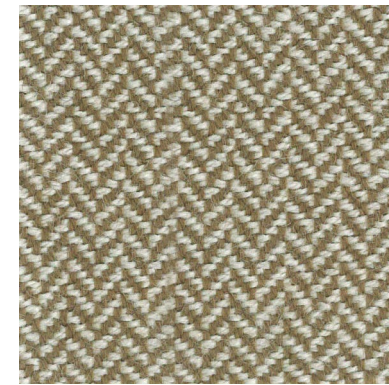


Black

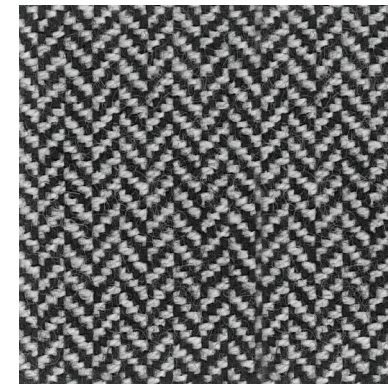


Blue

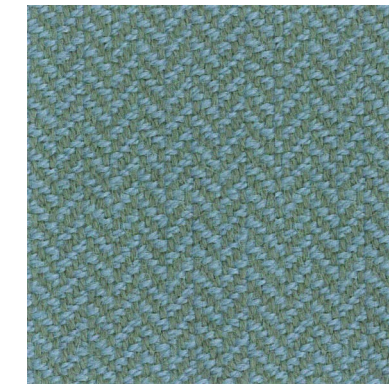
PePe Fabric group C / Upholstery category 2



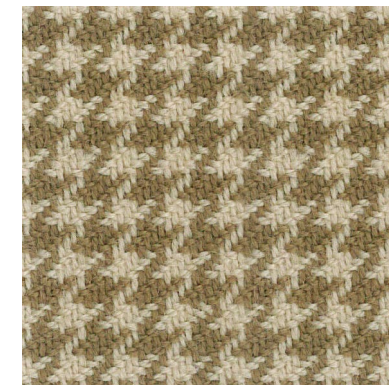
0302



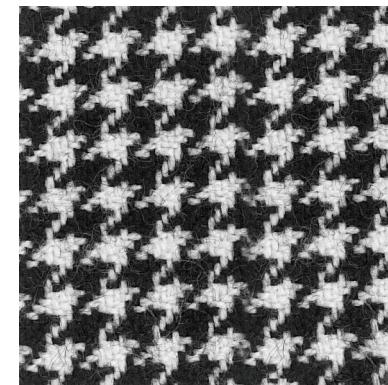
0102



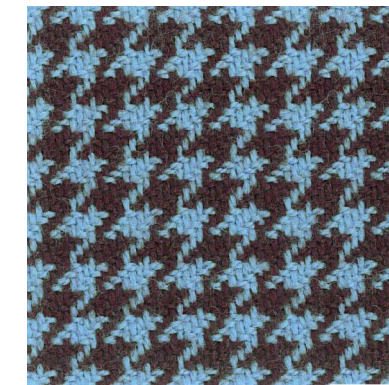
2367



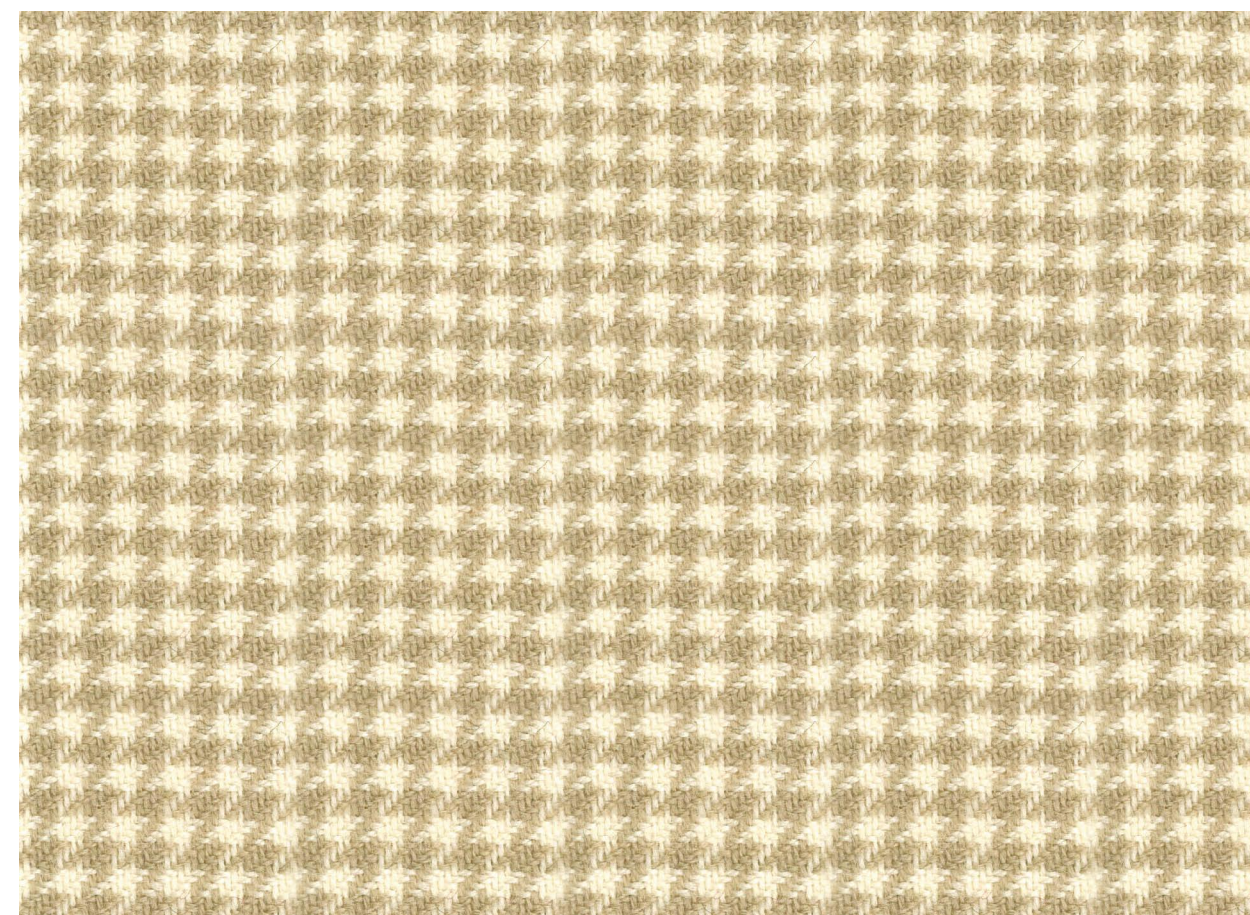
3838



0101



2323

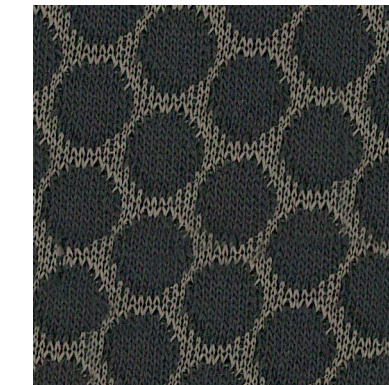


0202

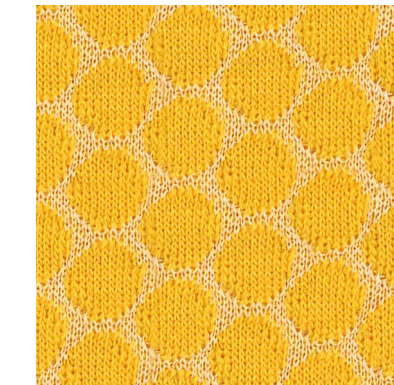
Spots Fabric group E / Upholstery category 3



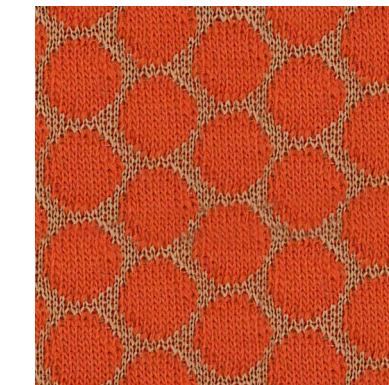
001



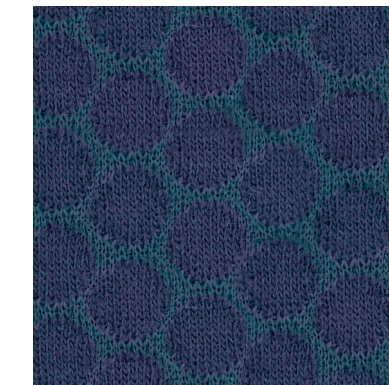
003



004



005



006



002

Crystals

Upholstery category 3	Stoffeercategorie 3	Catégorie de garnissage 3	Polsterkategorie 3
Description 45% wool / nylon 45% polyester 10% elasthan	Omschrijving 45% wol / nylon 45% polyester 10% elasthan	Description 45% laine / nylon 45% polyester 10% elasthan	Beschreibung 45% Wolle / Nylon 45% Polyester 10% Elasthan
Width: 175cm Weight: 730g/m ²	Breedte: 175cm Gewicht: 730g/m ²	Largeur: 175cm Poids: 730g/m ²	Breite: 175cm Gewicht: 730g/m ²
Tests Abrasion: App. >17.000 rubs acc. to Martindale Methode	Testgegevens Slijtvastheid: Ca. >17.000 toeren Martindale	Tests Résistance au brossage: Env. >17.000 tours Martindale	Prüfungsergebnisse Scheurfestigkeit: Ca. >17.000 Scheuerhübe gemäß der Martindale Methode
Colour fastness: (ISO) 6	Kleurechtheid: (ISO) 6	Inaltérabilité des couleurs: (ISO) 6 Inaltérabilité au	Lichtechtheit: (ISO) 6
Colour fastness to rub- bing: (ISO) dry/wet 4/5	Wrijftechtheid: (ISO) droog /nat 4/5	frottement: (ISO) sec/mouillé 4/5	Reibechtheit: (ISO) trocken/nass 4/5
Flame resistance: BS 1021-1/2	Brandvrijheid: BS 1021-1/2	Normes au feu: BS 1021-1/2	Flammschutz: BS 1021-1/2

premium
selection

Artifort • Lande

Home Collection¹

PePe

Upholstery category 2	Stoffeercategorie 2	Catégorie de garnissage 2	Polsterkategorie 2
Description 92% new wool 8% nylon	Omschrijving 92% scheerwol 8% nylon	Description 92% laine vierge 8% nylon	Beschreibung 92% Schurwolle 8% Nylon
Width: 140cm Weight: 357g/m ²	Breedte: 140cm Gewicht: 357g/m ²	Largeur: 140cm Poids: 357g/m ²	Breite: 140cm Gewicht: 357g/m ²
Tests Abrasion: App. >60.000 rubs acc. to Martindale Methode	Testgegevens Slijtvastheid: Ca. >60.000 toeren Martindale	Tests Résistance au brossage: Env. >60.000 tours Martindale	Prüfungsergebnisse Scheurfestigkeit: Ca. >60.000 Scheuerhübe gemäß der Martindale Methode
Colour fastness: (ISO) 5	Kleurechtheid: (ISO) 5	Inaltérabilité des couleurs: (ISO) 5 Inaltérabilité au	Lichtechtheit: (ISO) 5
Colour fastness to rub- bing: (ISO) dry 5 / wet 5	Wrijftechtheid: (ISO) droog 5 / nat 5	frottement: (ISO) sec 5 / mouillé 5	Reibechtheit: (ISO) trocken 5 / nass 5
Flame resistance: BS 5852-0/1 BS 1021-1/2	Brandvrijheid: BS 5852-0/1 BS 1021-1/2	Normes au feu: BS 5852-0/1 BS 1021-1/2	Flammschutz: BS 5852-0/1 BS 1021-1/2

Spots

Upholstery category 3	Stoffeercategorie 3	Catégorie de garnissage 3	Polsterkategorie 3
Description 80% wool / nylon 20% polyester	Omschrijving 80% wol / nylon 20% polyester	Description 80% laine / nylon 20% polyester	Beschreibung 80% Wolle / Nylon 20% Polyester
Width: 160cm Weight: 540g/m ²	Breedte: 160cm Gewicht: 540g/m ²	Largeur: 160cm Poids: 540g/m ²	Breite: 160cm Gewicht: 540g/m ²
Tests Abrasion: App. >50.000 rubs acc. to Martindale Methode	Testgegevens Slijtvastheid: Ca. >50.000 toeren Martindale	Tests Résistance au brossage: Env. >50.000 tours Martindale	Prüfungsergebnisse Scheurfestigkeit: Ca. >50.000 Scheuerhübe gemäß der Martindale Methode
Colour fastness: (ISO) 5	Kleurechtheid: (ISO) 5	Inaltérabilité des couleurs: (ISO) 5 Inaltérabilité au	Lichtechtheit: (ISO) 5
Colour fastness to rub- bing: (ISO) dry/wet 4/5	Wrijftechtheid: (ISO) droog /nat 4/5	frottement: (ISO) sec/mouillé 4/5	Reibechtheit: (ISO) trocken/nass 4/5
Flame resistance: BS 1021-1/2	Brandvrijheid: BS 1021-1/2	Normes au feu: BS 1021-1/2	Flammschutz: BS 1021-1/2

Lande Group

Lande Group